

# Cathedral Square Friends

Community Meeting

May 17, 2017

Cathedral of St. John Atrium



# Introduction

Dave Reid, President, Cathedral Square Friends

# Introduction – Who We Are

## Board of Directors

Dave Reid – President

Ed Beckard – Treasurer

Mariiana Tzotcheva – Secretary

Carl Baehr – Board Member

Sharon Woodhouse – Board Member

Dan Taylor – Board Member

Eddie Sturkey – Board Member

## Additional Advisors

Greg Patin

Kim Morris

Emily McElwee

**Local Residents, Business Owners, Neighborhood Organization Leaders**

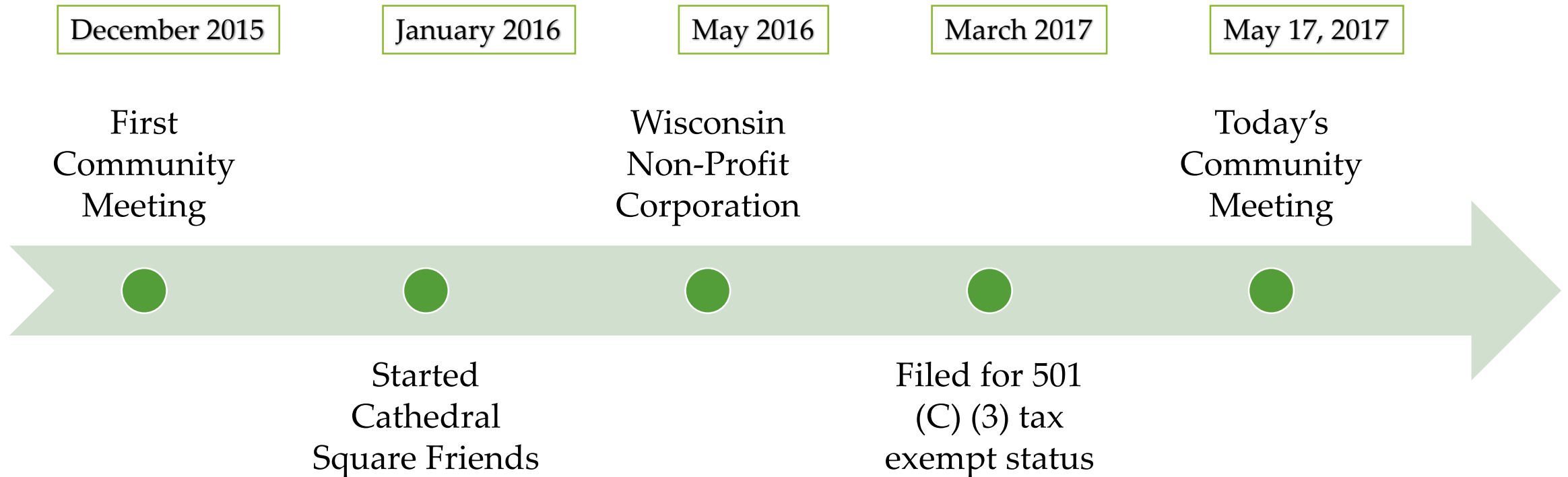
# Agenda

1. Introduction
2. Yesterday
3. Today
4. Tomorrow
5. Get Involved

# Introduction – Our Mission

The mission of Cathedral Square Friends is to support, maintain, and enhance Cathedral Square as a historic public gathering place.

# Introduction – How We Got Here



# Introduction – “Friends” Role

For local parks:

- A volunteer, citizens group that assists, augments, and compliments the efforts of Milwaukee County Parks and other local organizations
- Works to build a local support community, create plans, and fundraise
- Addresses items that are above and beyond those included in normal maintenance, design, and operations by Milwaukee County Parks
- Milwaukee County Parks has approximately 40 such organizations

# Introduction – Milwaukee County Park's Role:



- Owner/custodian of Cathedral Square
- Responsible for physical maintenance – lighting, lawn care, tree planting, landscaping, snow removal
- Leases the Square to local organizations and groups for events

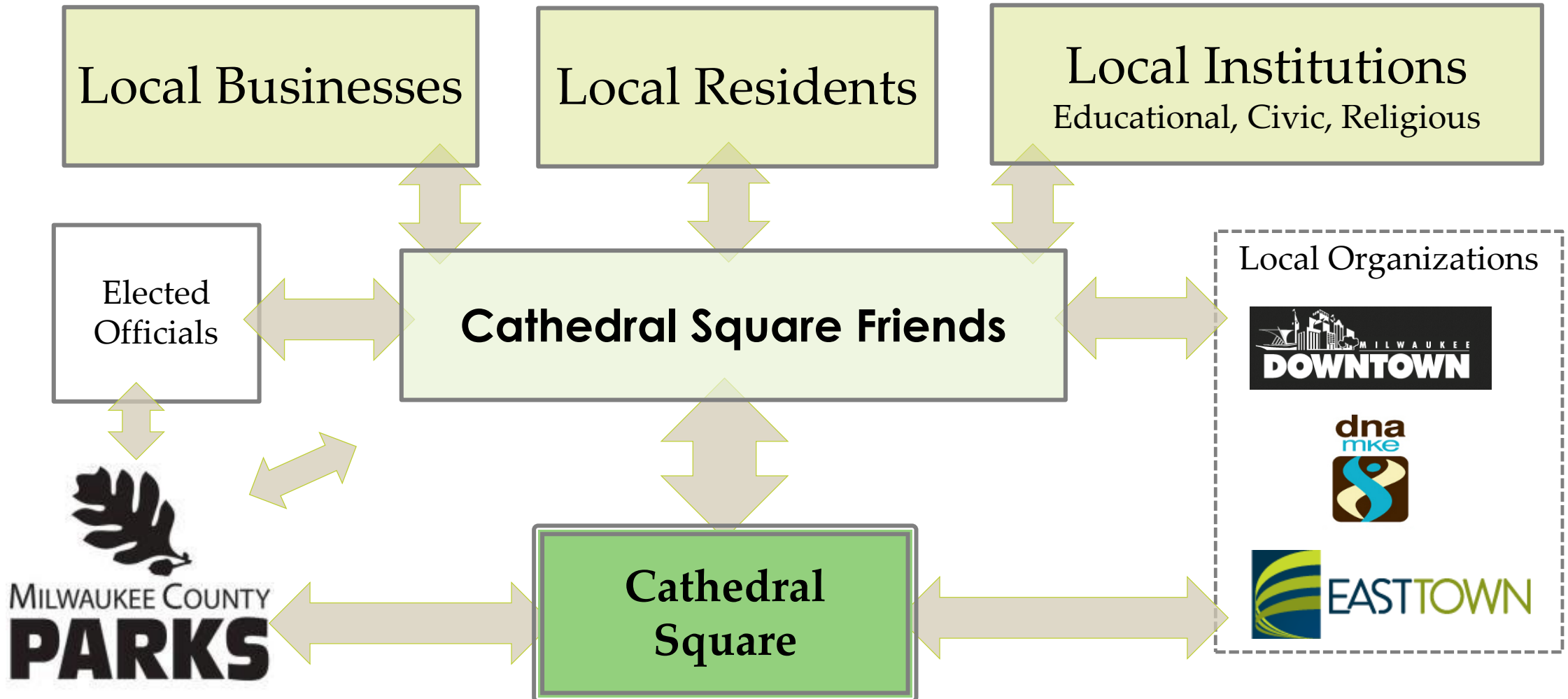


# Introduction – Other Local Organizations' Roles:



- East Town Association
- Milwaukee Downtown (Business Improvement District No. 21)
- Downtown Neighborhood Association

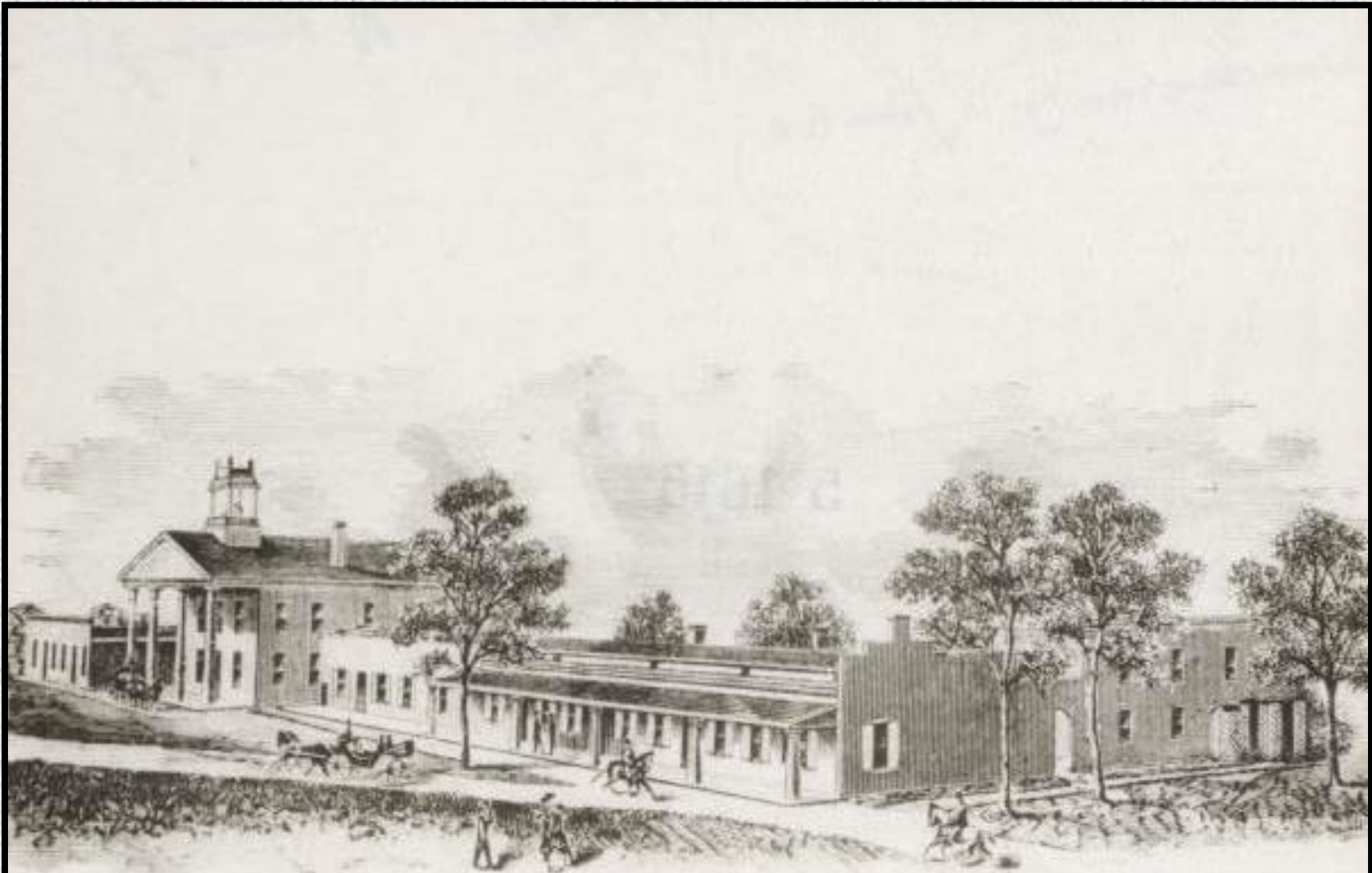
# Introduction – Roles: Working Together





# Yesterday

The History of Cathedral Square, by Carl Baehr



OLD COURT HOUSE—MILWAUKEE 1839.

COURT HOUSE SQUARE

DONATED, IN 1837, BY  
SOLOMON JUNEAU

MORGAN L. MARTIN,

FOR A PUBLIC RECREATION SPOT.

THE PEOPLE OF MILWAUKEE OWE A DEBT OF  
EVERLASTING GRATITUDE TO THESE  
PUBLIC-SPIRITED PIONEERS.





## RESCUE OF JOSHUA GLOVER

Joshua Glover was a runaway slave who sought freedom in Racine in 1852. In 1854, his Missouri owner used the Fugitive Slave Act to apprehend him. This 1850 law permitted slave catchers to cross state lines to capture escaped slaves. Glover was taken to Milwaukee and imprisoned.

Word spread about Glover's incarceration and a great crowd gathered around the jail demanding his release. They beat down the jail door and released Joshua Glover. He was eventually escorted to Canada and safety.

The Glover incident helped galvanize abolitionist sentiment in Wisconsin. This case eventually led the state supreme court to defy the federal government by declaring the Fugitive Slave Act unconstitutional.

ERECTED 2001  
STATE HISTORICAL SOCIETY OF WISCONSIN





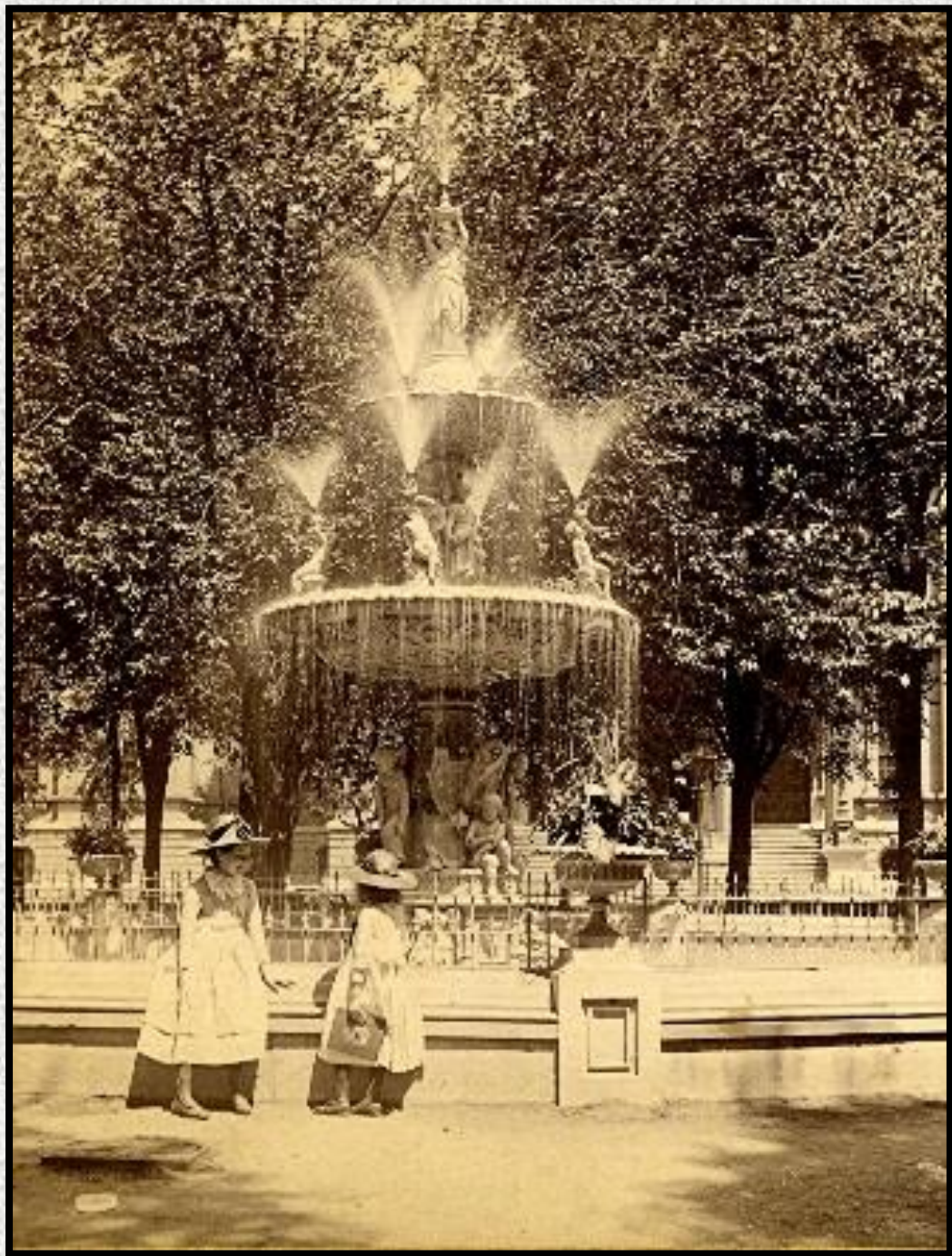


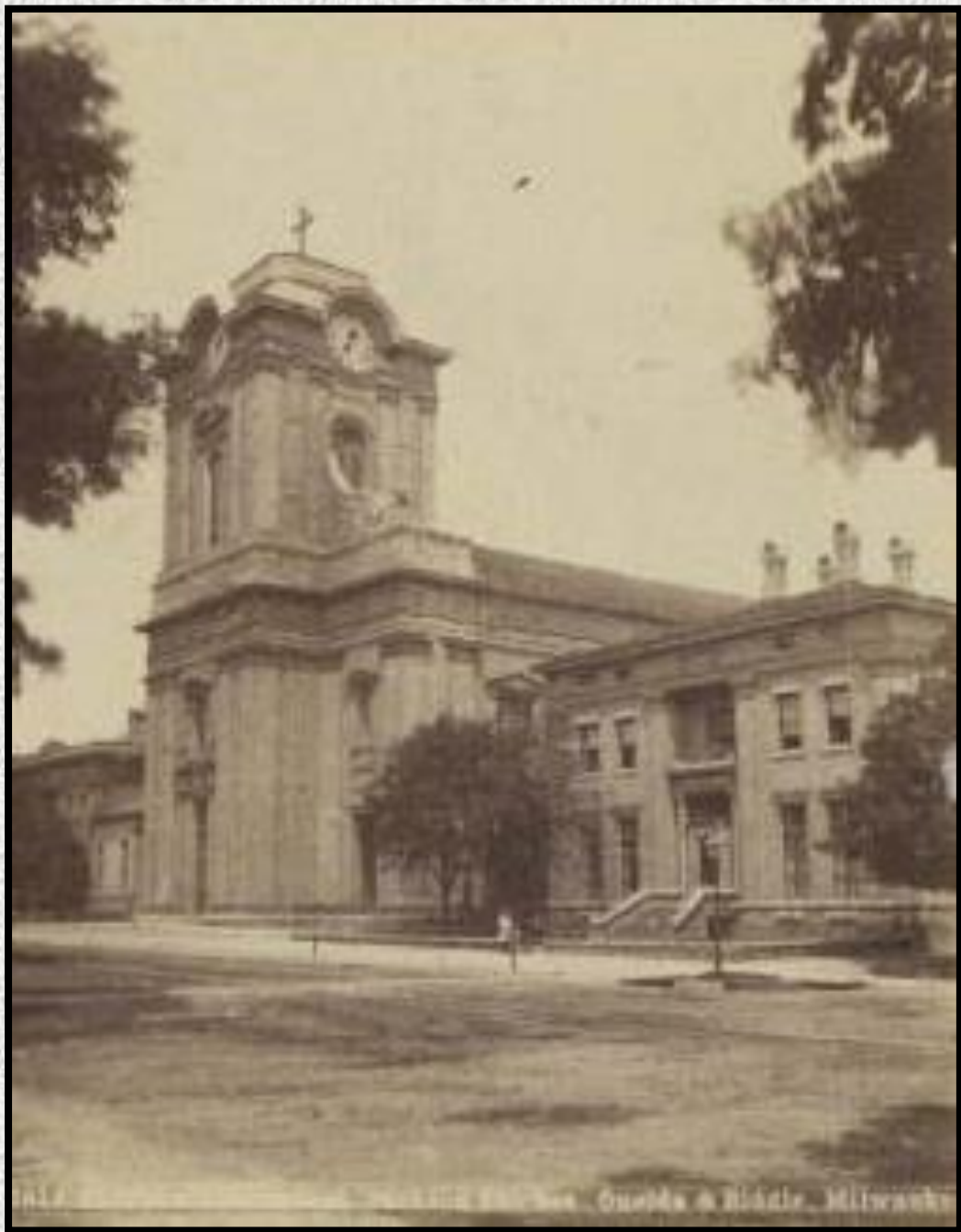
MILWAUKEE COURT HOUSE.

Engraved by David A. Reister, Milwaukee.

L. A. WOODMAN





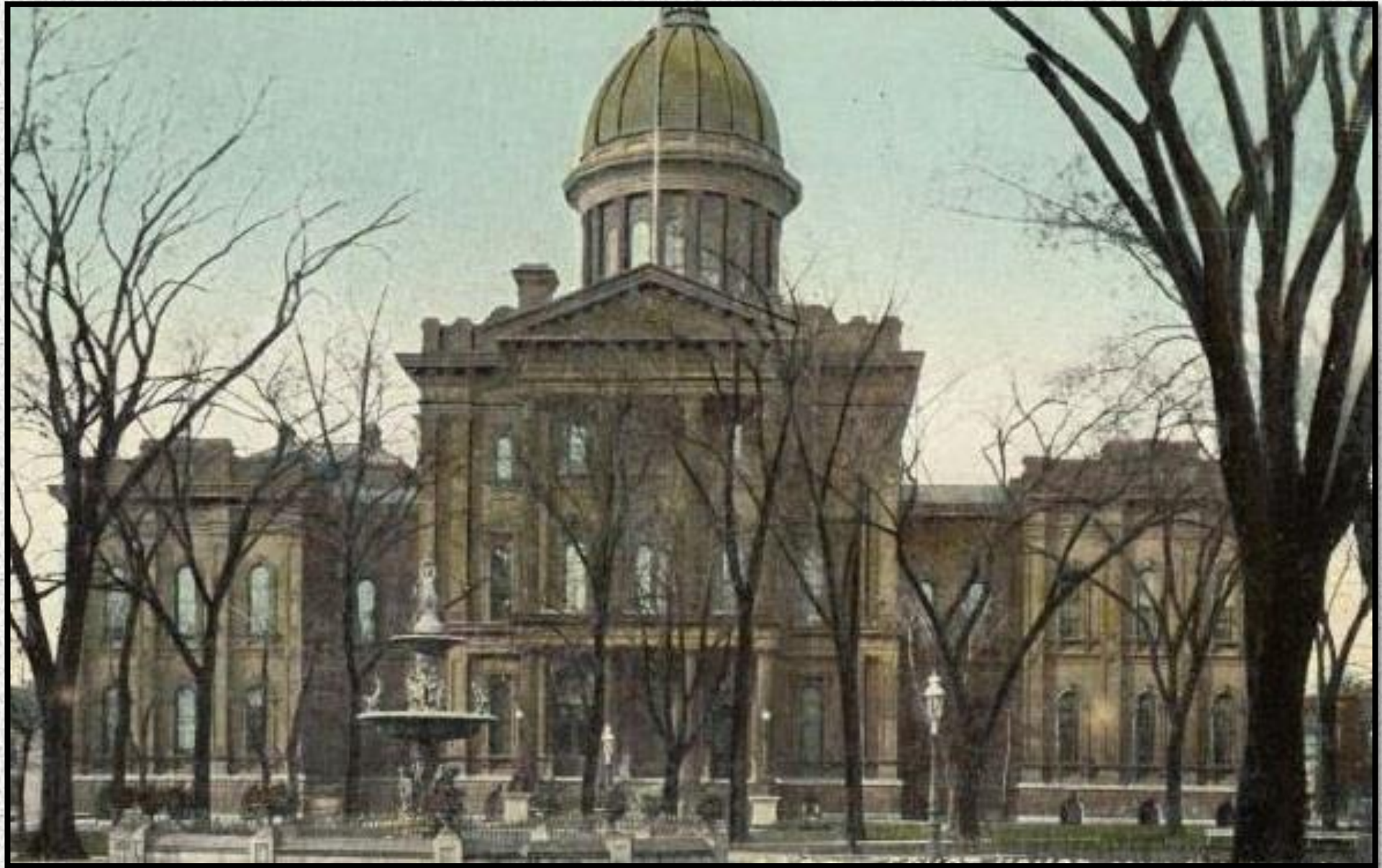


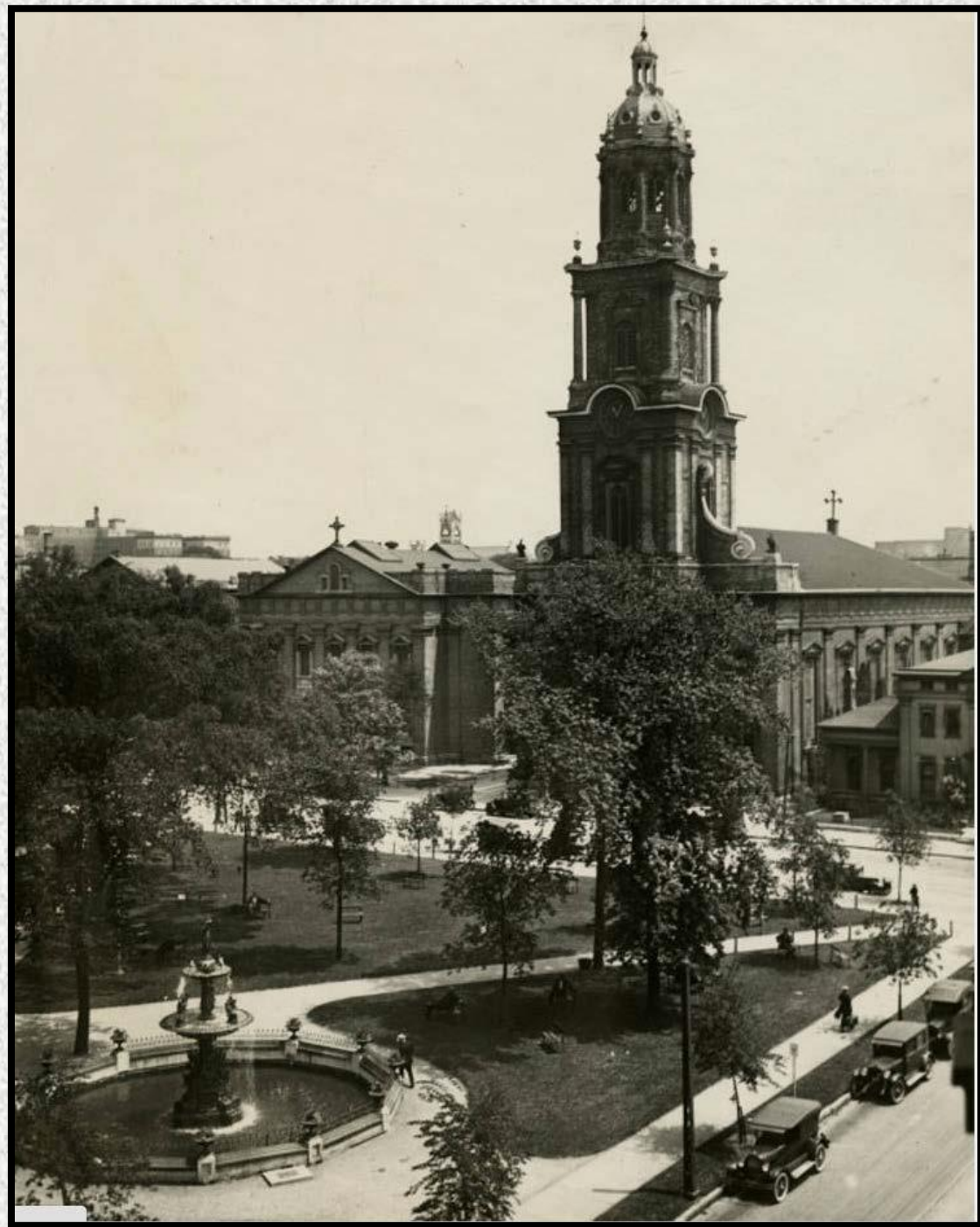
1877. The University of Wisconsin, Madison. Gudden & Biddle, Milwaukee.





Court House Park  
and St. John's Cathedral,  
Milwaukee, Wis.



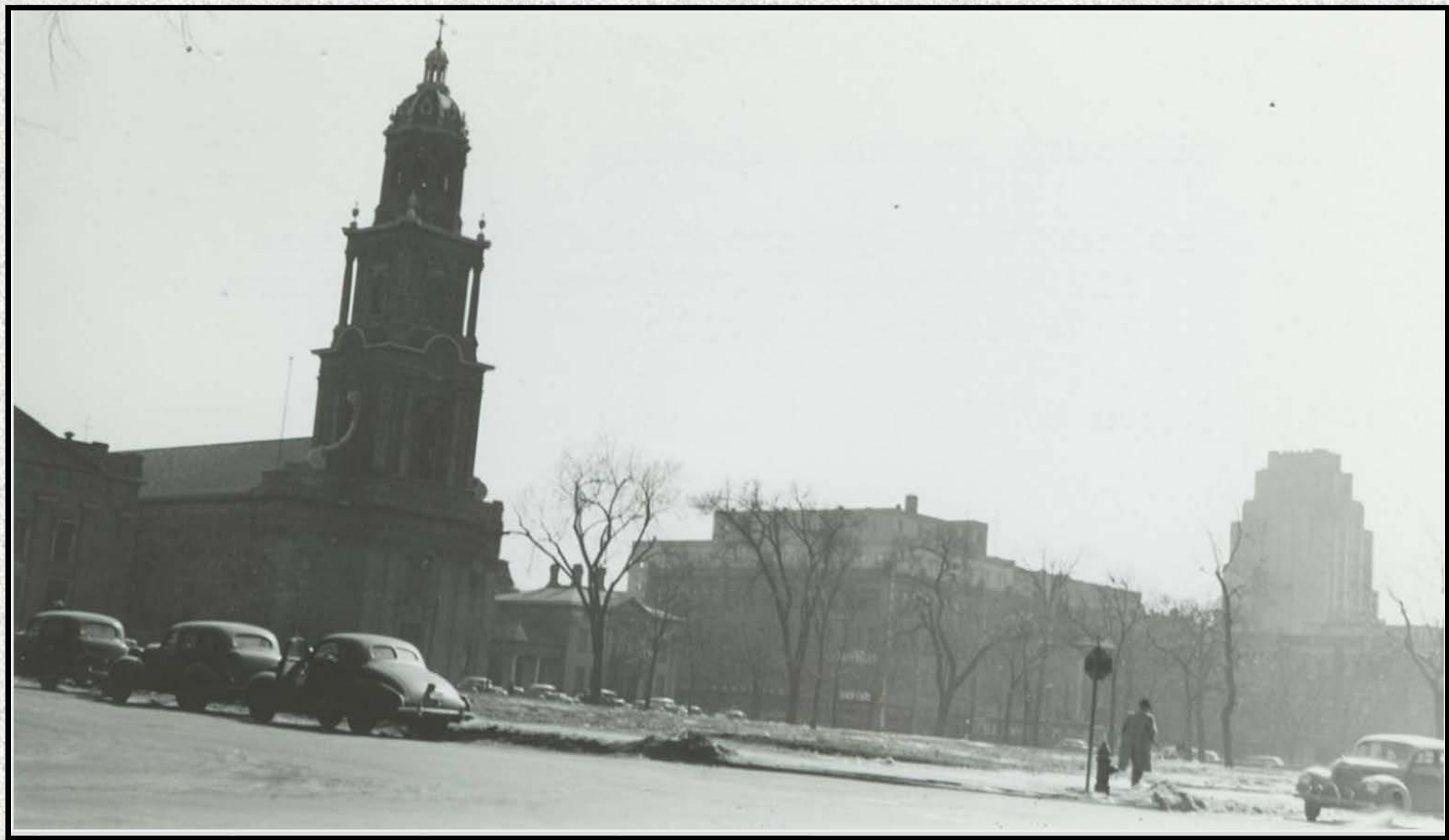














MAY

62

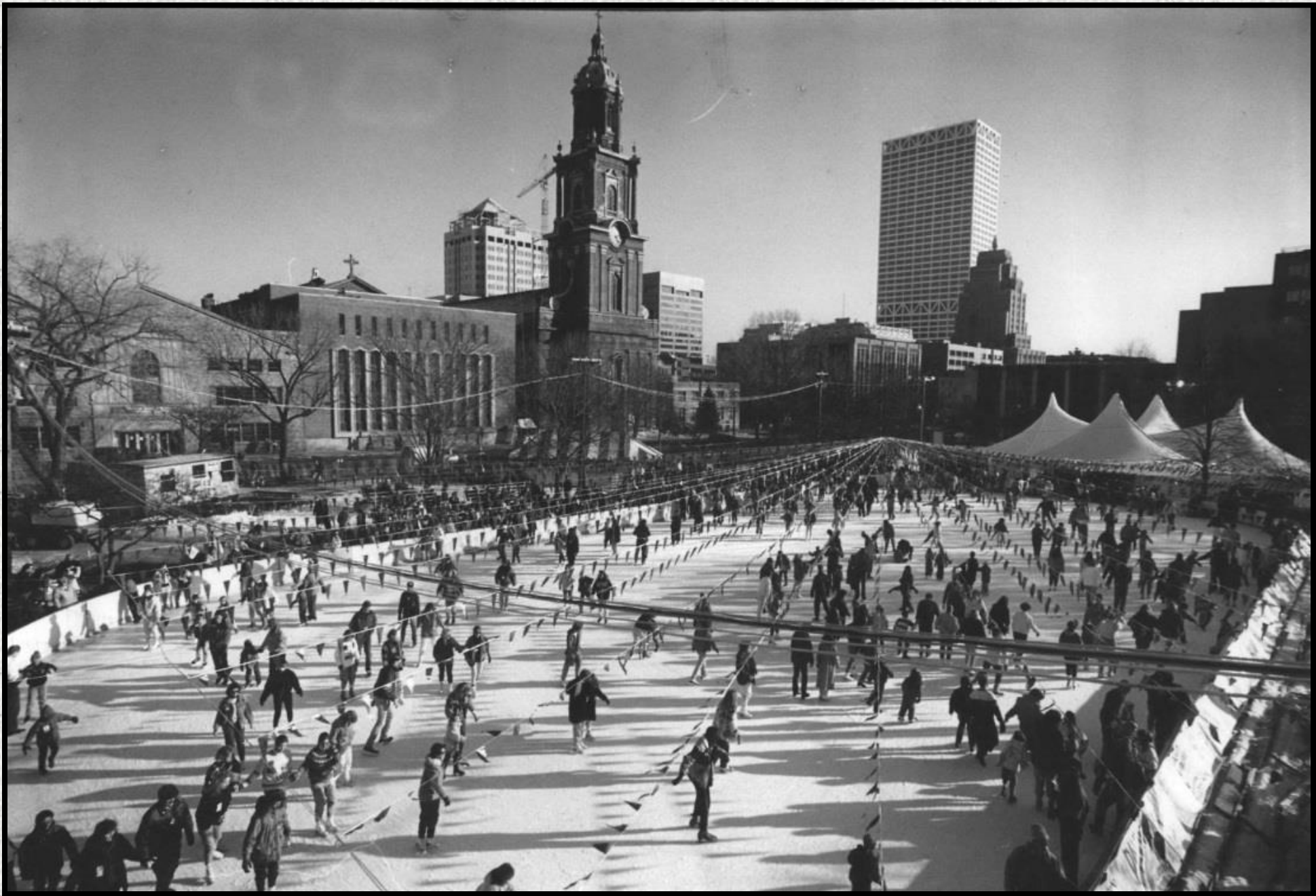
















# Today

The Square Today, by Greg Patin

# Today

## Weekly Use of Square in Summer



# Today

- Sprecher Beer Garden
- NFL Sunday in the square



# Special Event Use of Square



# Today

- 9 11 Memorial Event
- w/ Milwaukee Symphony



## Special Event Use of Square



# Today

## Non-Event Use of Square

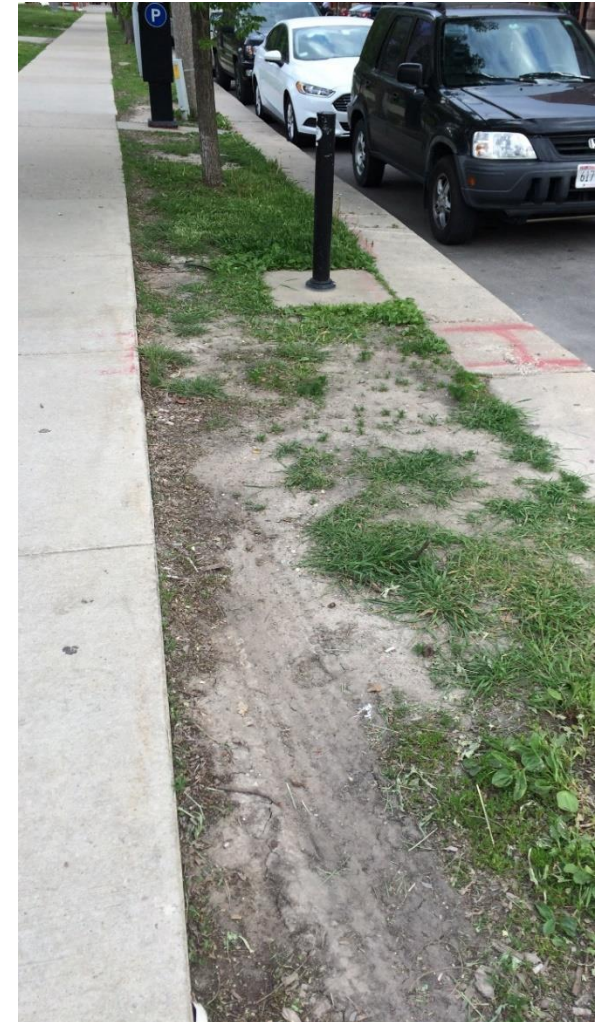
- Casual use of Square





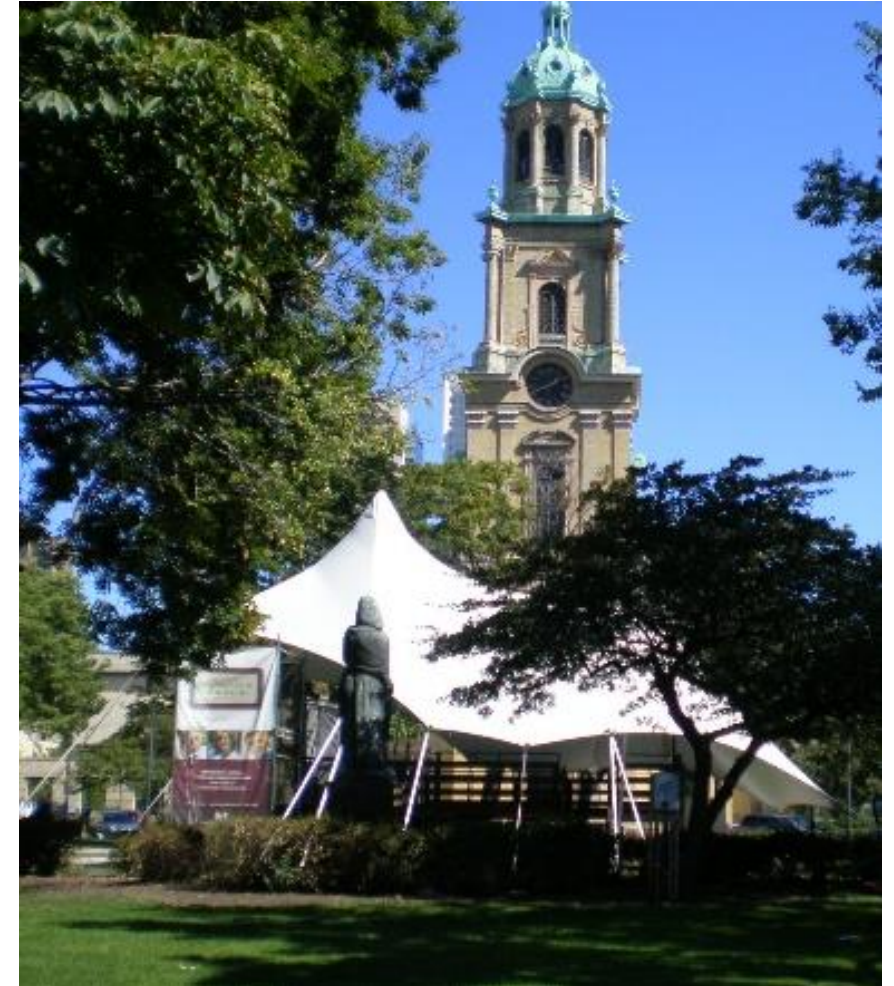
# Today – Current Condition

- Improvements needed



# Today – Current Condition

- Need for permanent facilities



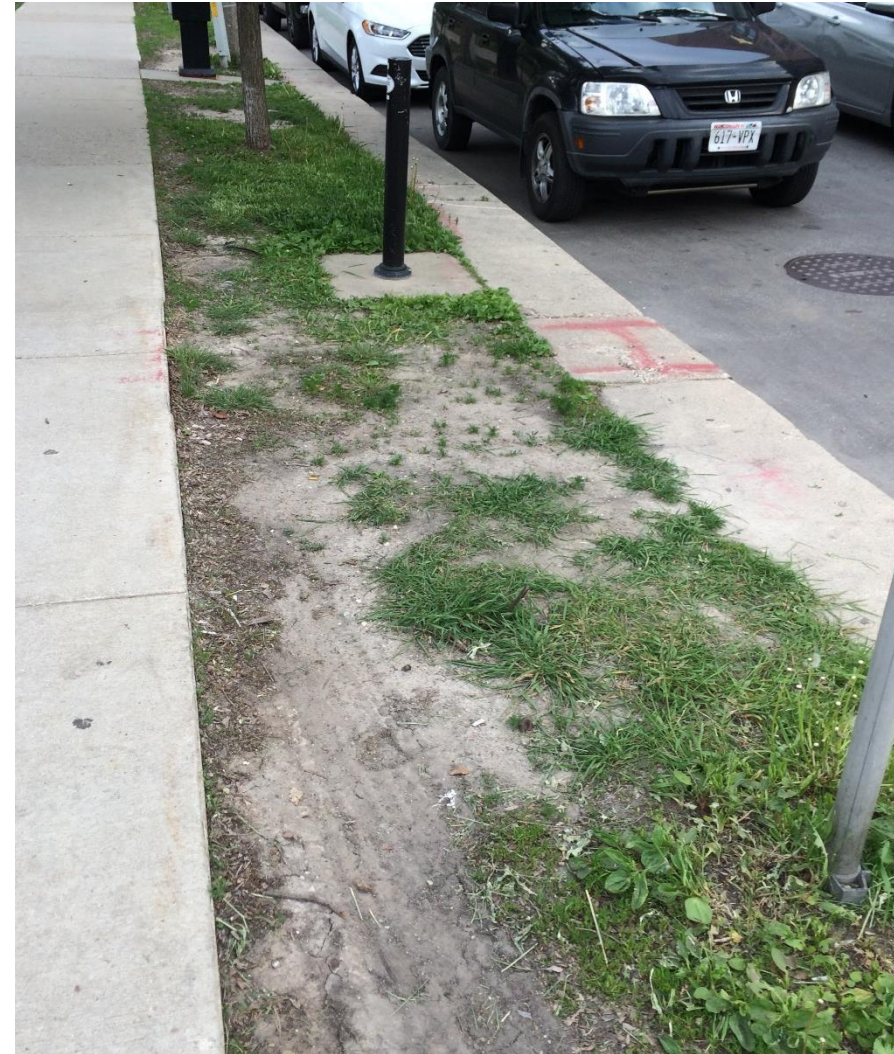
# Today – Current Initiatives



# Today

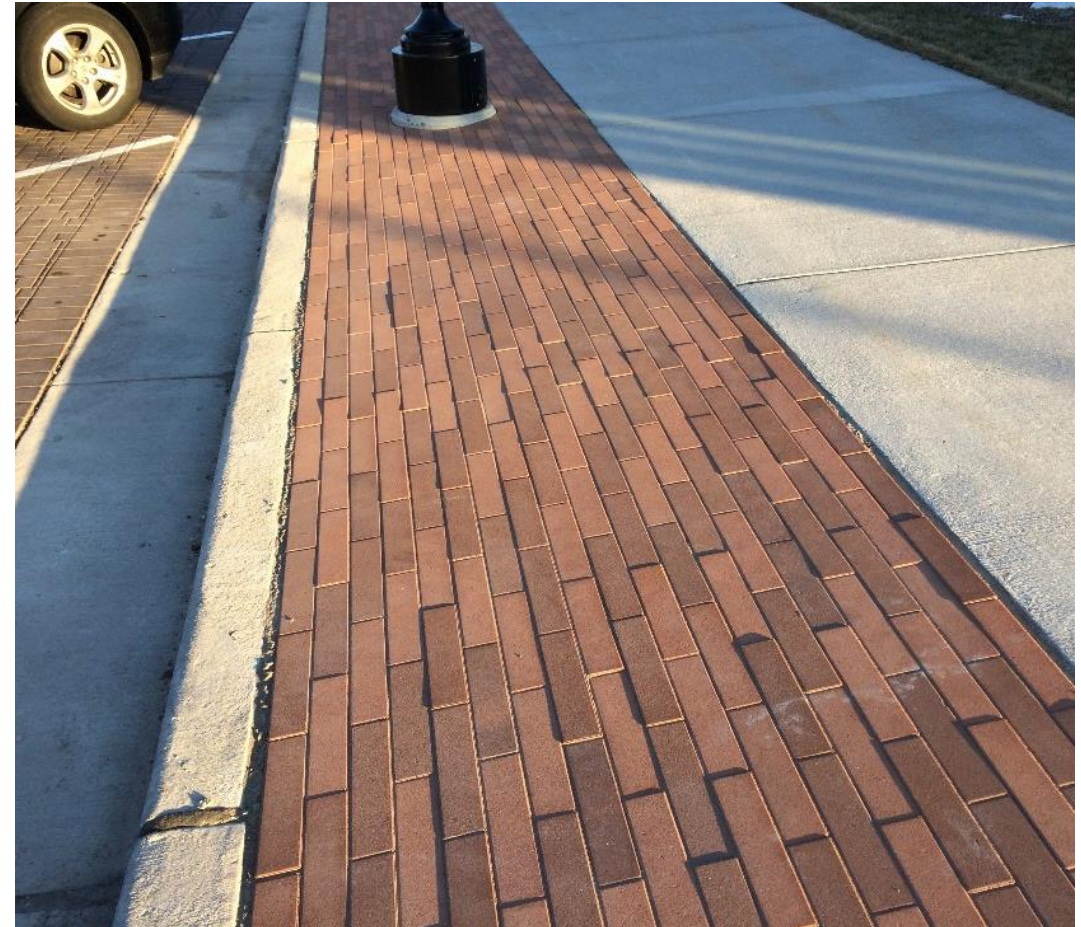
## Terrace Area (Perimeter of Square)

- Major wear, eroding lawn area, dirt, mud
- Uneven surface, tripping hazard



# Potential

- Paver bricks
- Decorative concrete
- Other comparable options
- Details on tree boxes



Terrace Area (Perimeter of Square)

# Today

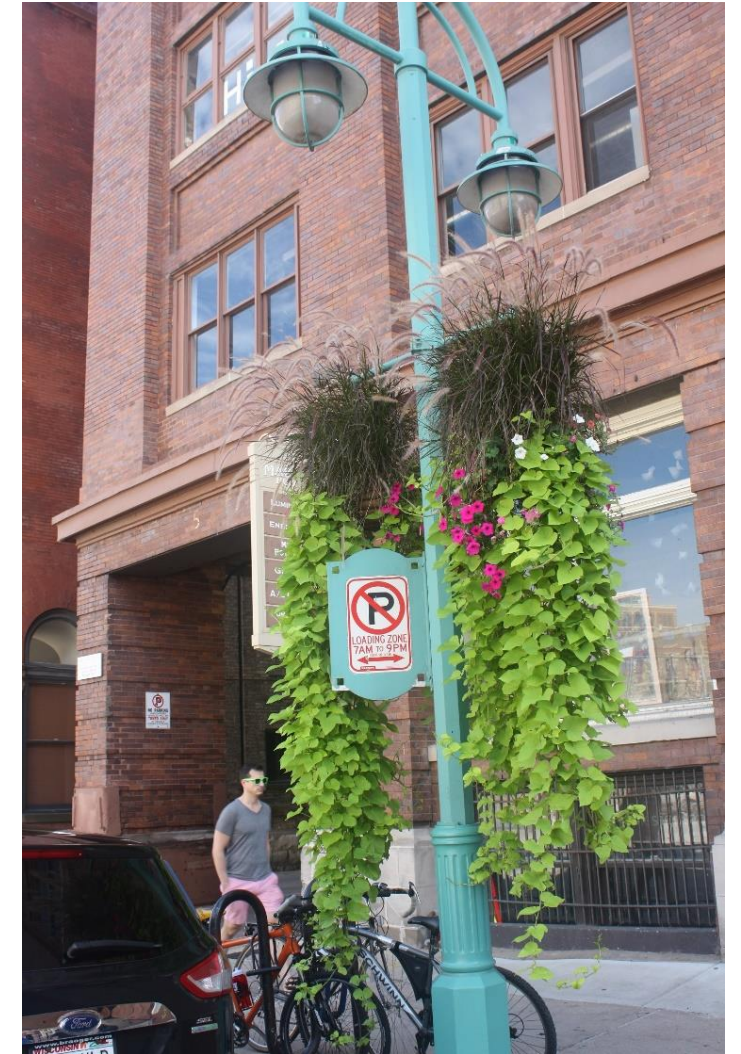
## Landscape Details and Design Lacking

- Lack of any fine level of finishes in or around the Square



# Potential

- Add plantings to the Square
- Exploring hanging flower baskets at perimeter and at paths



## Flower Baskets on Light Poles

# Today

- It's the oldest playground in the parks system by 11 years.



## Existing Playground Is Outdated





# Today

- The playground is not only popular during events, but with the increasing number of families who live downtown.



## Playground Is Heavily Used



# Potential

## New Playground Design and Equipment

- Playground funding by Milwaukee County



# Tomorrow

## Comprehensive Master Plan



The featured guest speaker was architect **Chris Socha** of TKWA/Urban Lab, who gave a presentation on the process of creating or re-creating public spaces. He gave multiple examples of how this has been accomplished in other locations, and then focused on other efforts currently in discussion in other parts of downtown Milwaukee. The conclusion of Chris' presentation brought the conversation back to the idea of a longer term vision for the square. A vision that would be built upon public community input and carefully looking at the needs and goals for the space.



# Get Involved

# Get Involved

Cathedral Square Friends, Inc. is a Wisconsin nonstock corporation. Currently, donations are not tax deductible.

- Join
- Donate
- Volunteer

# Get Involved – Contact Us

- Website: <http://cathedralsquarefriends.org>
- Facebook: <https://www.facebook.com/CathedralSquareFriends/>
- Email: [info@cathedralsquarefriends.org](mailto:info@cathedralsquarefriends.org)
- Online survey: <http://cathedralsquarefriends.org/#survey>



[www.cathedralsquarefriends.org](http://www.cathedralsquarefriends.org)